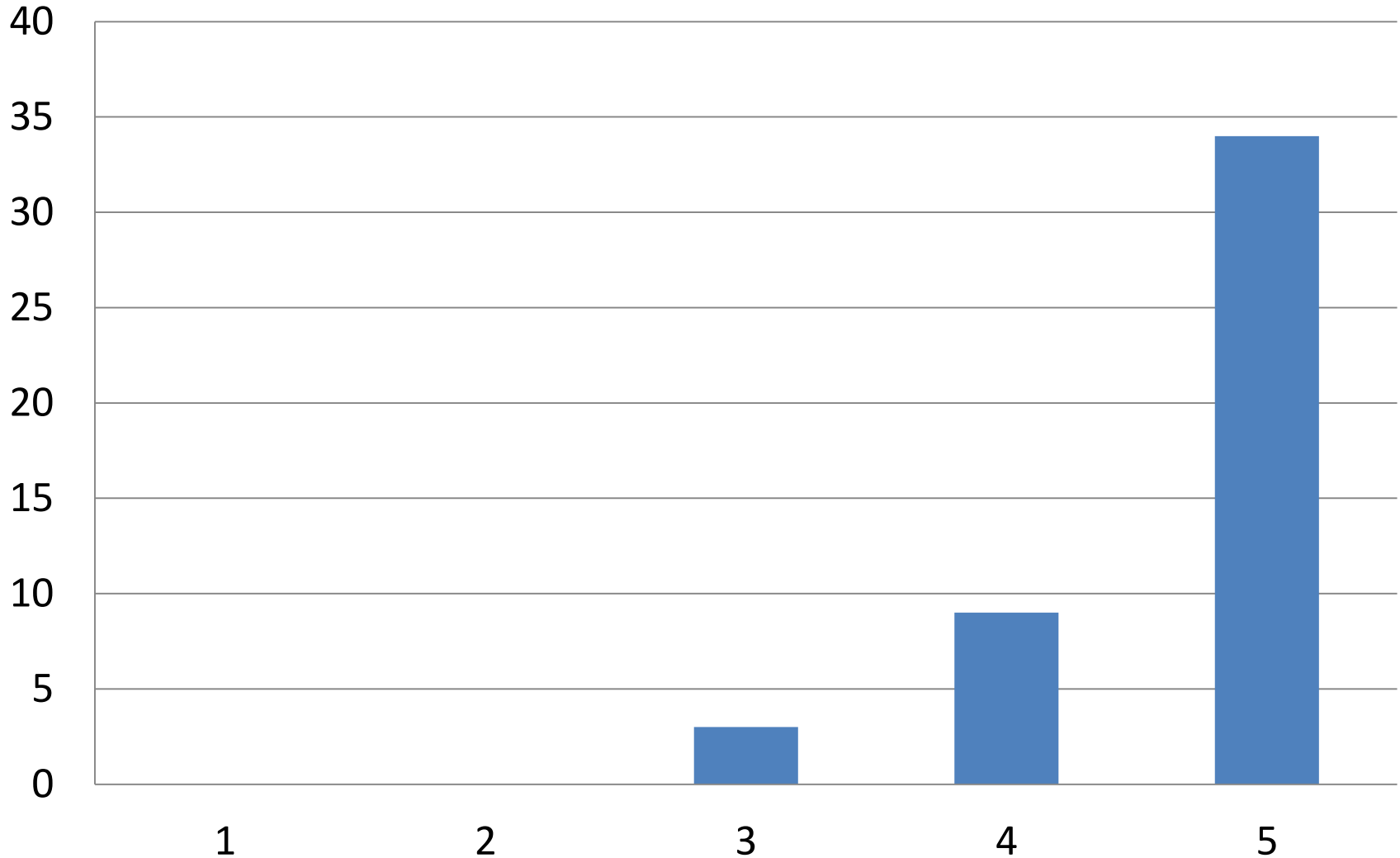


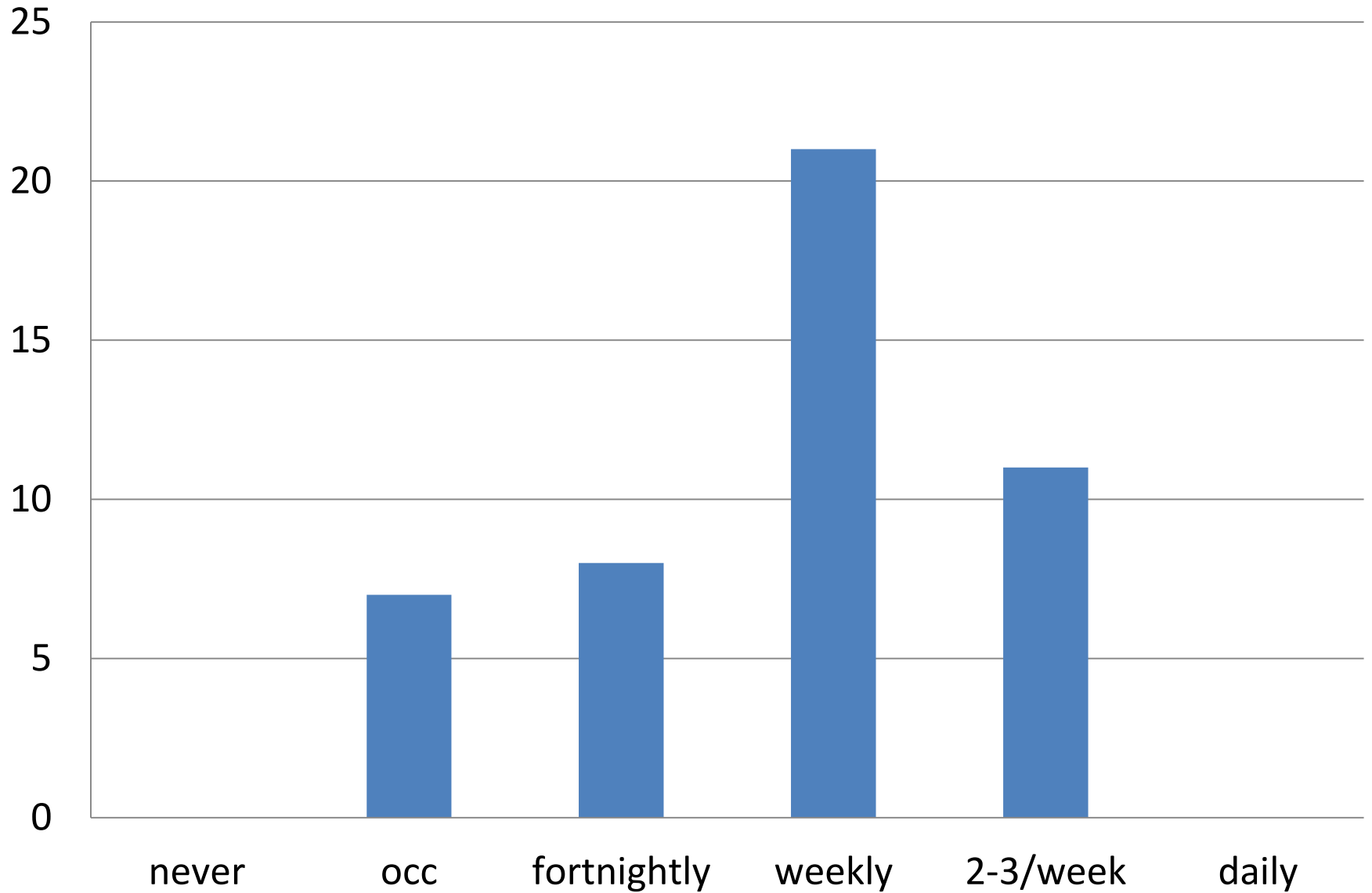
How important is it to have a local pub in Ash?

0=not at all, 5=very

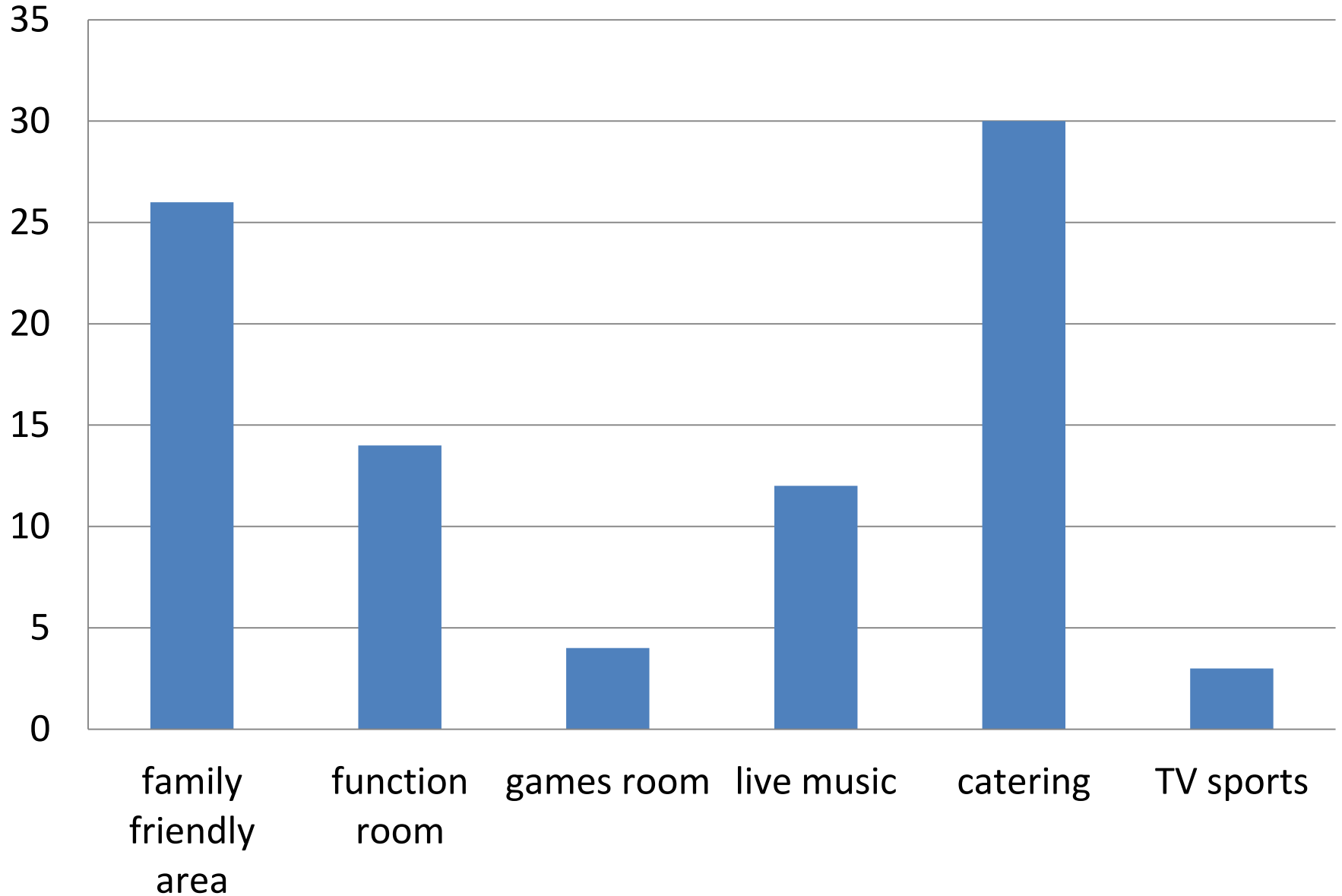
Mean 4.67, n=46



How often would you use the pub?

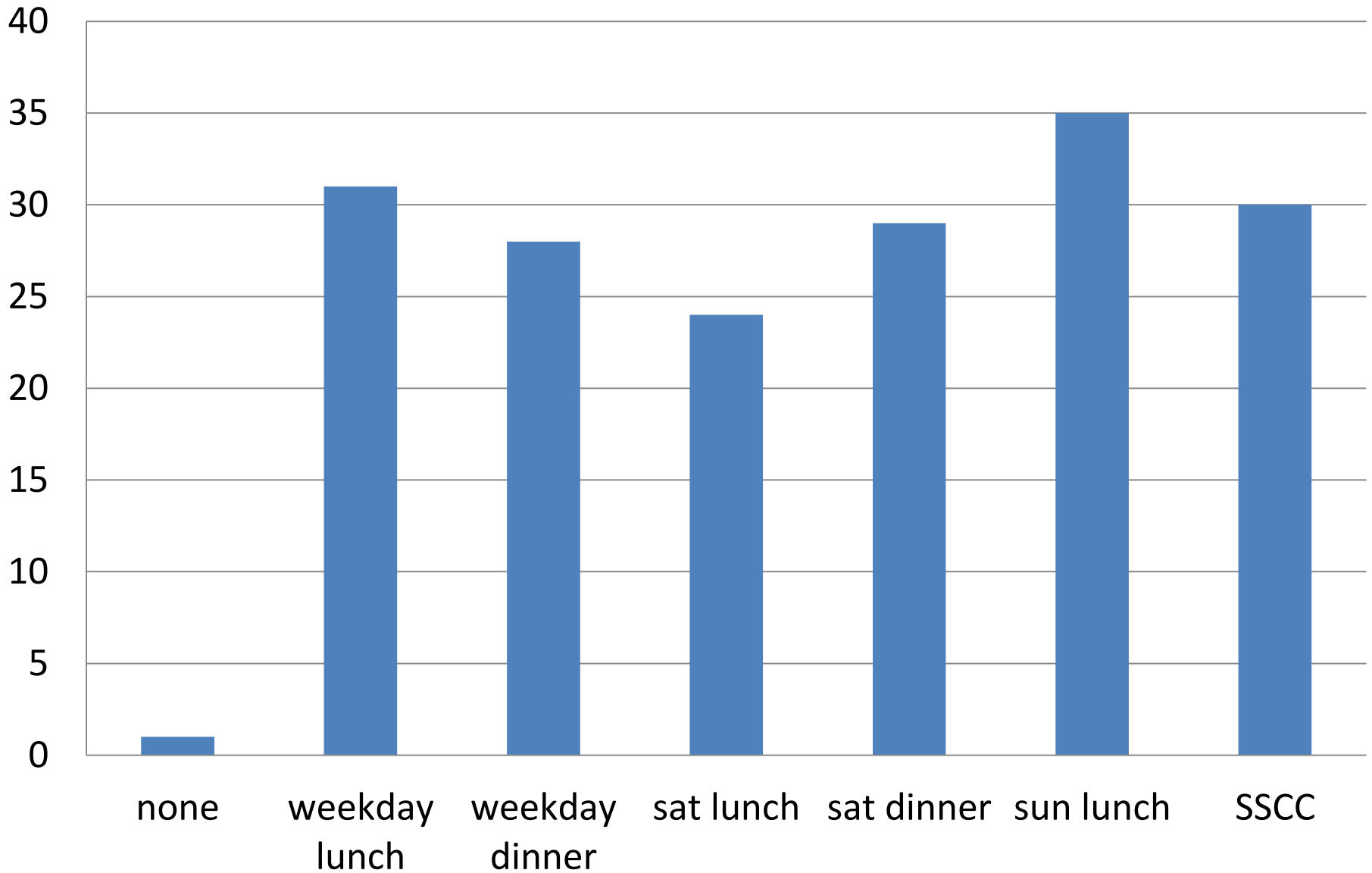


Additional services?

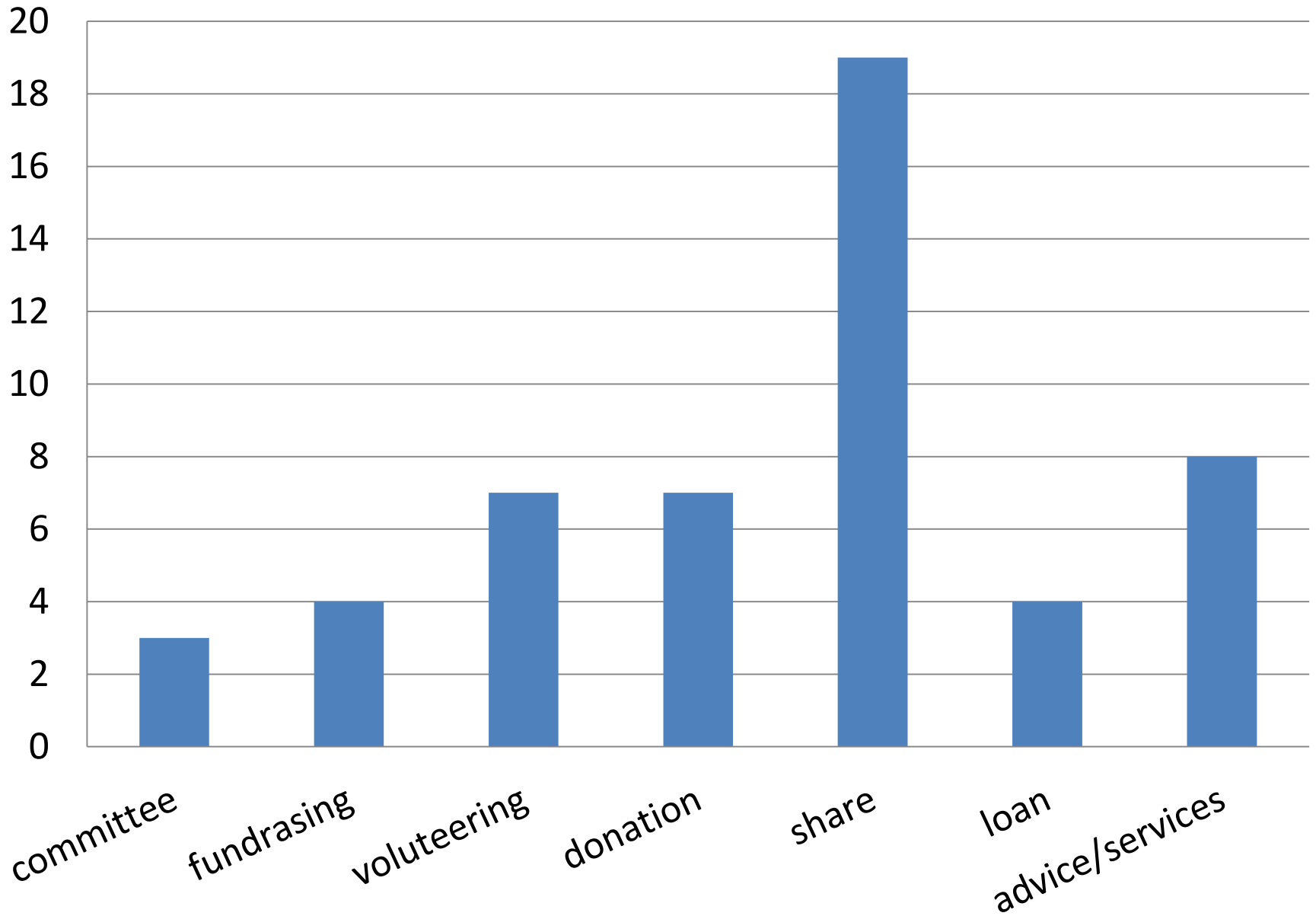


Catering?

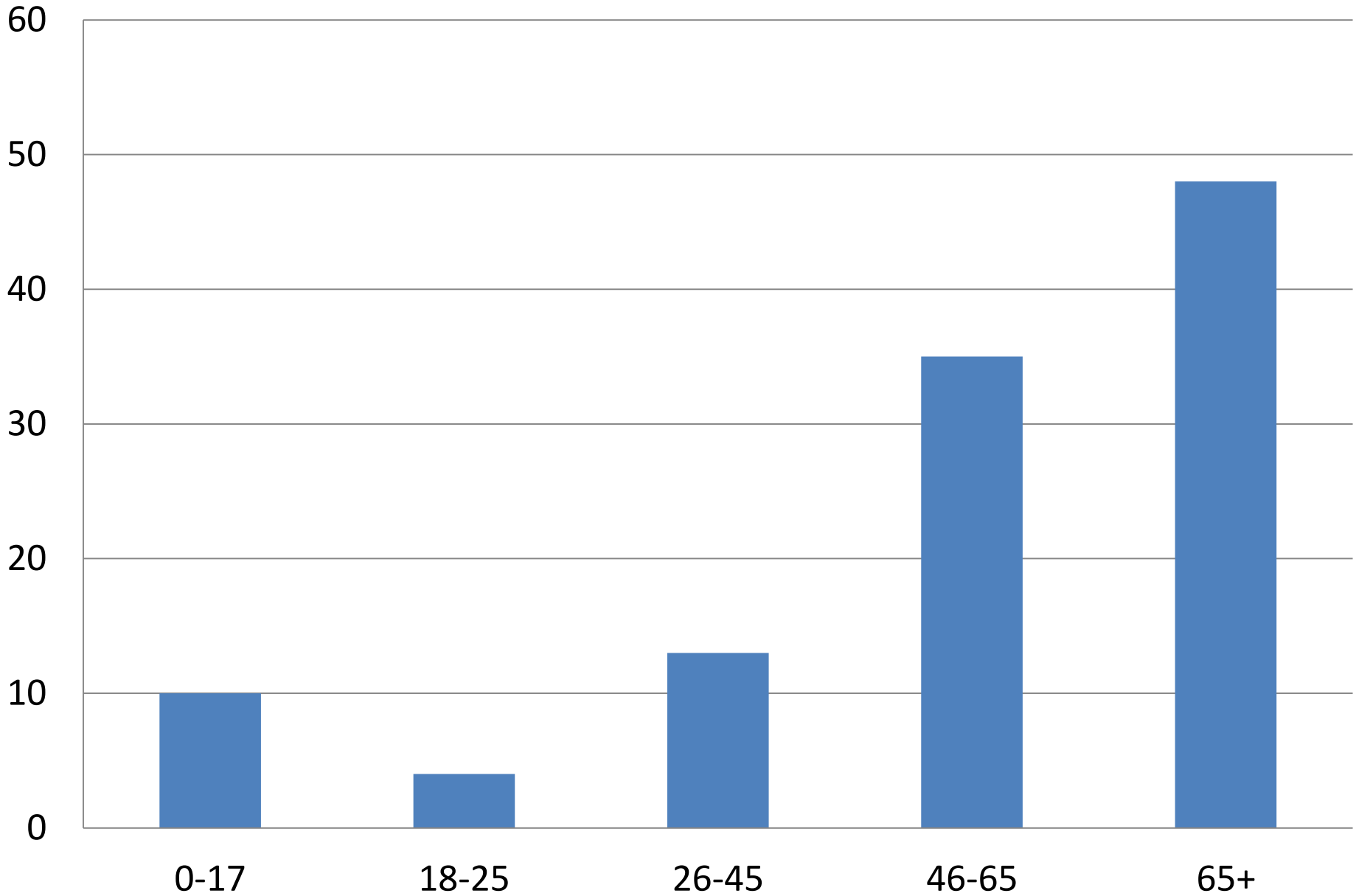
(SSCC=snacks, sandwiches, coffee, cakes)



How would you help?



Numbers in household by age



Other suggested services:

Quizzes and other activities

Group meetings/events

Dog , horse, walker, cyclist friendly

Board games, garden games

Craft/local/selection of draught beers. Microbrewery.

Good range of wine by the glass

Bat and trap

Theme nights

Accommodation

Barbeques

Farmers market

TV for major sporting events

Services/advice offered

Previous publicans

Solicitor

Soft furnishings

Business advice

Photographer

Gardening

DIY

Other

Need to bring in custom from outside village

Approach Shepherd Neame (other breweries) for finance?

Good, simple, local, traditional food and well run bar - 'Like the Haywain, Black Pig, Anchor'